

**LEGEND:**

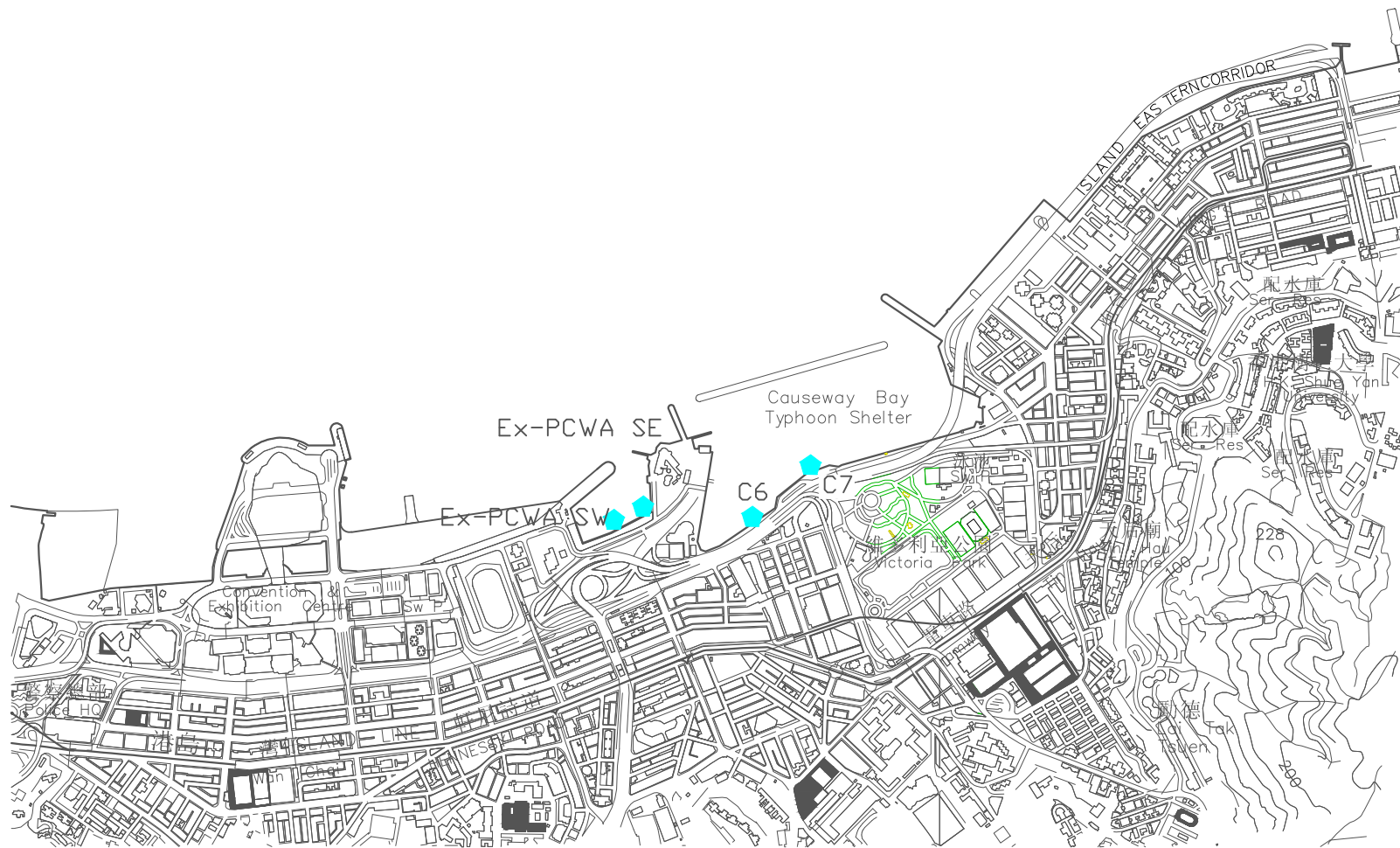
**WATER QUALITY MONITORING STATIONS**

- C1 HONG KONG CONVENTION AND EXHIBITION CENTRE EXTENSION
- C2 TELECOM HOUSE/HK ACADEMY FOR PERFORMING/ SHUI ON CENTRE
- C3 HONG KONG CONVENTION AND EXHIBITION CENTRE PHASE I
- C4 WAN CHAI TOWER AND GREAT EAGLE CENTRE
- C5 SUN HUNG KAI CENTRE
- C6 PROPOSED EXHIBITION STATION / WORLD TRADE CENTRE
- C7 WINDSOR HOUSE
- C8 CITY GARDEN
- C9 PROVIDENT CENTRE
- RC1 PROPOSED HKAPA EXTENSION
- RC5 SUN HUNG KAI CENTRE (REPROVISION)
- RC7 WINDSOR HOUSE (TEMPORARY REPROVISION)
- WSD21 WAN CHAI
- RW1 WAN CHAI (REPROVISION)



**Legend**

- ◆ Enhance DO Monitoring Stations
- Ex-PCWA SE Ex-Public Cargo Wanchai Area SouthEast Station
- Ex-PCWA SW Ex-Public Cargo Wanchai Area Southwest Station
- C6 Proposed Exhibition Station/ World Trade Centre
- C7 Windsor House



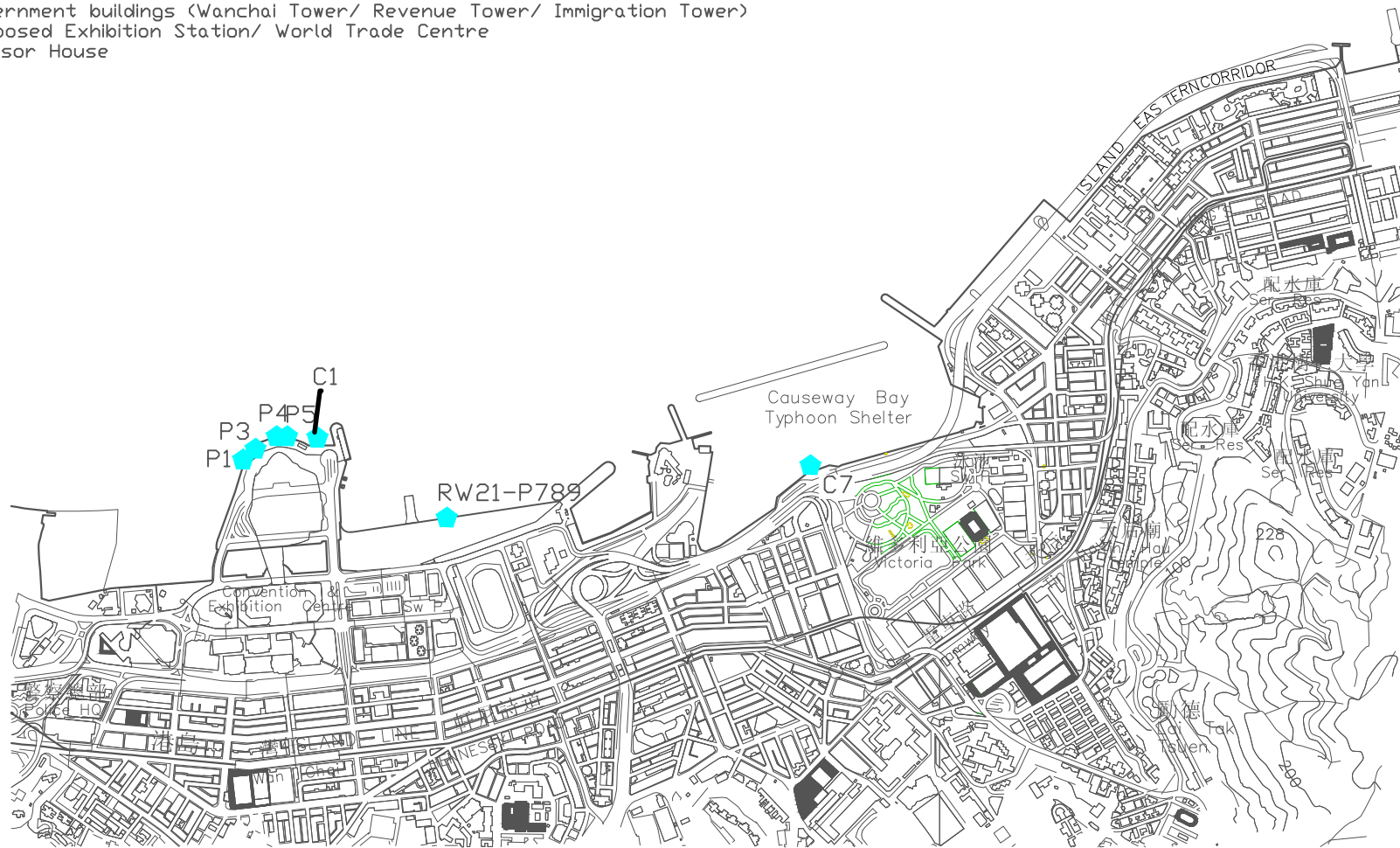
**FIGURE**

**LOCATIONS OF ENHANCE DO MONITORING STATIONS**



**Legend**

- ◆ Water Quality Monitoring Stations
- RW21-P789 (Wanchai WSD intake/ Great Eagle Centre/ China Resources Centre/ Sun Hung Kai Centre)
- C1 Hong Kong Convention and Exhibition Centre Extension
- P1 Hong Kong Convention and Exhibition Centre Phase 1
- P3 HK Academy For Performing Art
- P4 Shui On Centre
- P5 Government buildings (Wanchai Tower/ Revenue Tower/ Immigration Tower)
- C6 Proposed Exhibition Station/ World Trade Centre
- C7 Windsor House

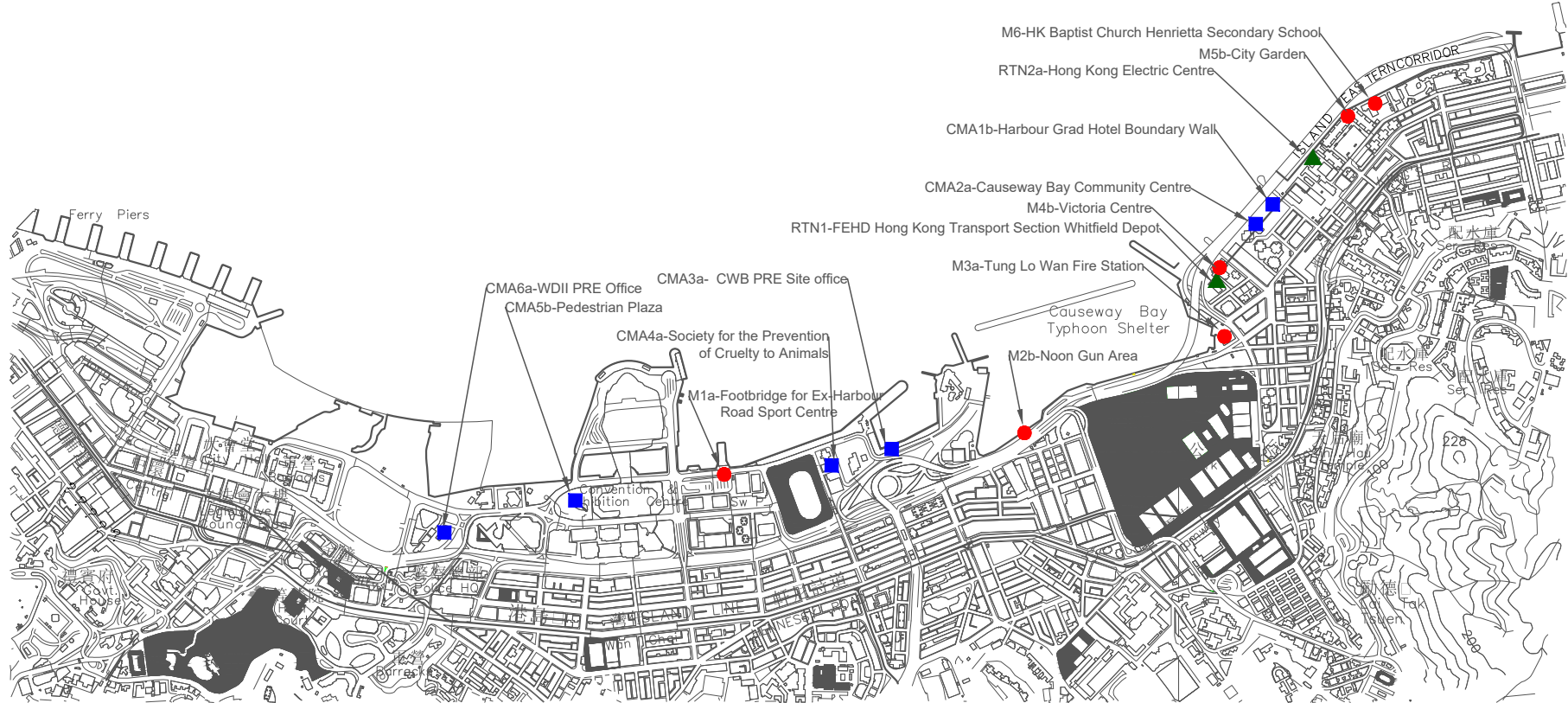


**FIGURE**

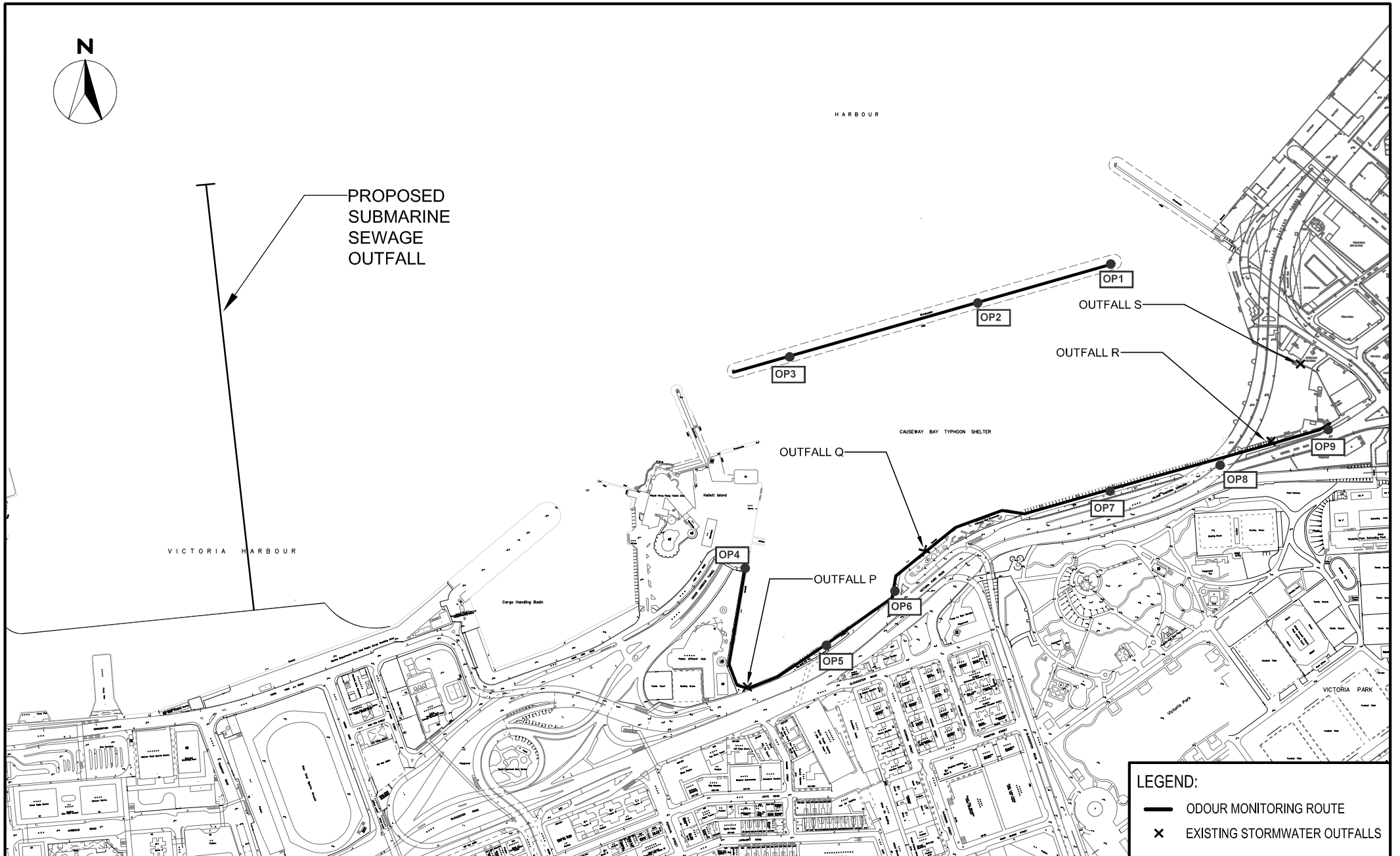
**LOCATIONS OF WATER QUALITY MONITORING STATIONS**

**Legend**

- Noise Monitoring Station
- Air Monitoring Station
- ▲ Real-time Noise Monitoring Station



**LOCATIONS OF AIR QUALITY AND NOISE MONITORING STATIONS**



**Location Plan for Odour Monitoring Station**

**Figure 3.1**